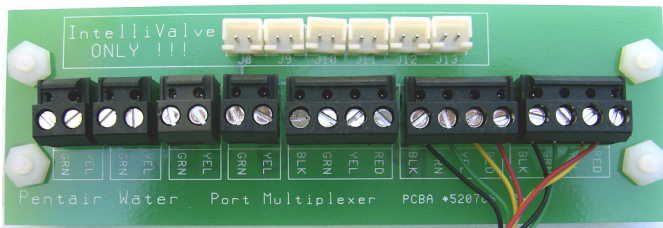


Serial COM Port Expansion Board

(for use with IntelliTouch® and
EasyTouch® control systems)



Installation Guide

**IMPORTANT SAFETY INSTRUCTIONS
READ AND FOLLOW ALL INSTRUCTIONS
SAVE THESE INSTRUCTIONS**

CONTENTS

Introduction	1
IntelliTouch and EasyTouch Load Center Installation	1
Mounting the Expansion Board	2
Connecting Accessories to the Expansion Board	2
Wiring a Salt Chlorine Generator to IntelliTouch	5
IntelliFlo pump wiring pinouts	5

Serial COM port expansion kit contents (P/N 520818)

The following items are included in the kit:

- One Serial COM port expansion board populated with three four position and four two position screw terminal blocks.
- 12 inches of attached wire.
- Four screws, two Expansion Board brackets
- Installation Guide (this manual)

Technical Support

Contact Technical Support at:

Sanford, North Carolina (8 A.M. to 5 P.M.)

Phone: (800) 831-7133

Moorpark, California (8 A.M. to 5 P.M.)

Phone: (800) 831-7133

Fax: (800) 284-4151

Web sites: **visit www.pentairpool.com and www.staritepool.com**

Related IntelliTouch Manual

IntelliTouch User's Guide (P/N 521075)

EasyTouch Indoor Control Panel Installation and User's Guide (P/N 520617)

© 2011 Pentair Water Pool and Spa, Inc. All rights reserved.

1620 Hawkins Ave., Sanford, NC 27330 • (919) 566-8000

10951 West Los Angeles Ave., Moorpark, CA 93021 • (800) 553-5000

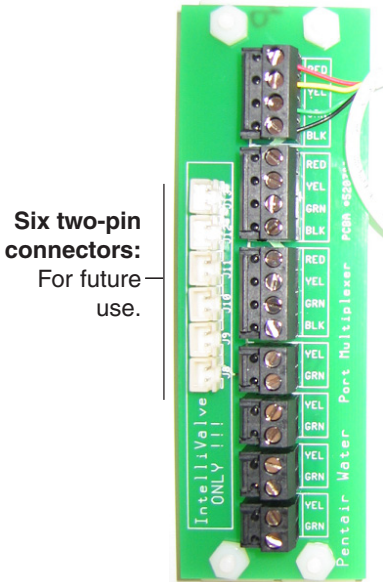
IntelliTouch®, IntelliFlo®, IntelliChlor®, QuickTouch®, MobileTouch®, ScreenLogic® and EasyTouch® are registered trademarks of Pentair Water Pool and Spa, Inc. Other trademarks and trade names may be used in this document to refer to either the entities claiming the marks and names or their products. Pentair Water Pool and Spa, Inc. disclaims proprietary interest in marks and names of others.

P/N 520817 - Rev B 09/27/11

IntelliTouch/EasyTouch Serial COM Port Expansion Installation Guide

Introduction

The Serial COM port expansion board can be used with IntelliTouch and EasyTouch systems. Connect accessory equipment to the Expansion board as shown:



Six two-pin connectors:
For future use.

Three four-pin screw terminal blocks (COM ports). One COM port must be connected to the IntelliTouch Personality board or EasyTouch motherboard. For use with IntelliTouch iS10 remote controller, QuickTouch®, MobileTouch® wireless controllers, IntelliTouch indoor control panels, EasyTouch control panel, EasyTouch wireless control panel, ScreenLogic® protocol adapter, the IntelliTouch i5x and i10x expansion load centers, IntelliChlor electronic chlorine generator, i-Link Protocol Interface adapter, and many other accessories.

Four two-pin non-power screw terminals. For RS-485 communication to IntelliFlo pumps.

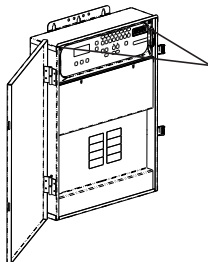
Serial COM port expansion board

Load Center Installation

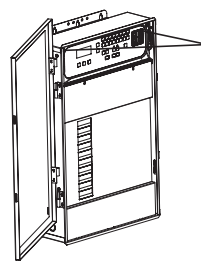


WARNING Switch OFF the main system power to the load center before making any connections.

1. Unlatch front door spring latch/latches, and open the door.
2. Loosen the two access screws securing the control panel and fold it down.
3. Proceed to “**Mounting the Expansion board,**” on page 2.
4. After the expansion has been mounted and connected, close the control panel into its original position and secure it with the two access screws. Close the load center front door. Fasten the spring latch/latches.



Original Load Center Enclosure

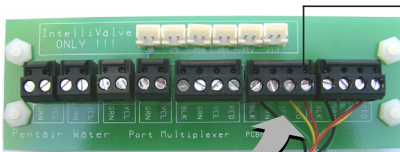


New Style Load Center Enclosure

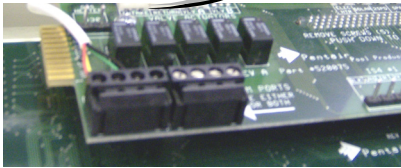
Mounting the Expansion Board

1. Remove the inside terminal connectors (with wires attached) from the Expansion board and connect it to a COM port on the Personality board.

Note: If this a first time installation, you'll have to remove one of the existing (empty) terminal connectors from the Personality board to allow for the Expansion board terminal connector. You can place the (empty) connector onto the available COM port on the Expansion board.



Remove this terminal connector and connect it to an available COM port on the IntelliTouch Personality board or EasyTouch motherboard



Personality Board

2. Mount the Expansion board on to the back wall in the low voltage compartment of the IntelliTouch or EasyTouch load center using the four adhesive backed supports.
3. Proceed to “Connecting Accessories to the Expansion Board,” below.

Connecting Accessories to the Expansion Board

If you have existing accessories (IntelliChlor®, IntelliFlo) connected to the IntelliTouch Personality board or EasyTouch motherboard COM port, remove the connector with attached wires and connect the connector to an available terminal on the Expansion board COM port (as shown on page 3).

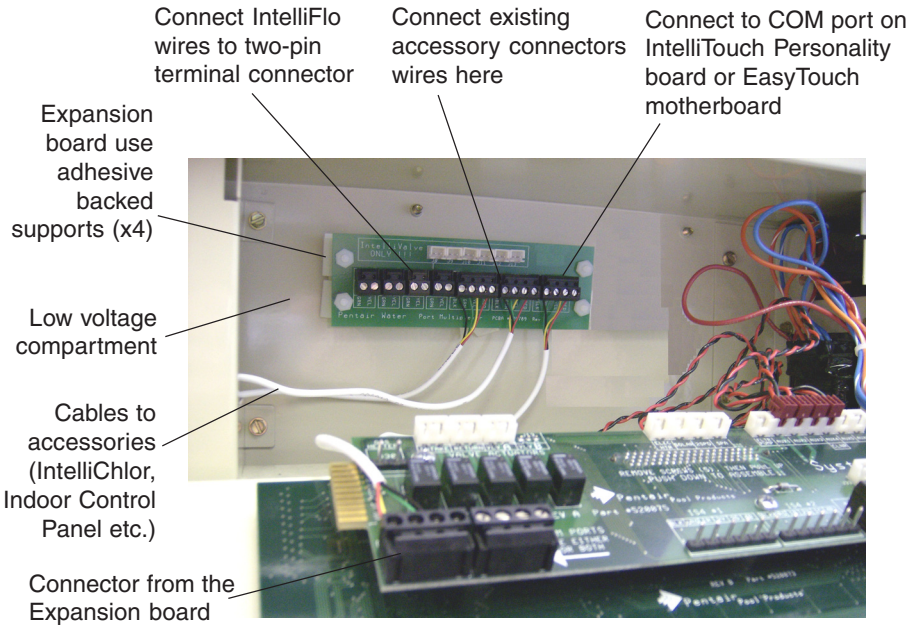


Figure 1. IntelliTouch (Original) Load Center

Installing the Expansion Board in the EasyTouch/IntelliTouch Load Center

1. Remove the two screws from the back of the load center low voltage compartment.
2. Install the two Expansion Board brackets and secure with the two screws.
3. Mount the Expansion Board onto the bracket and secure with the four screws (provided in kit).

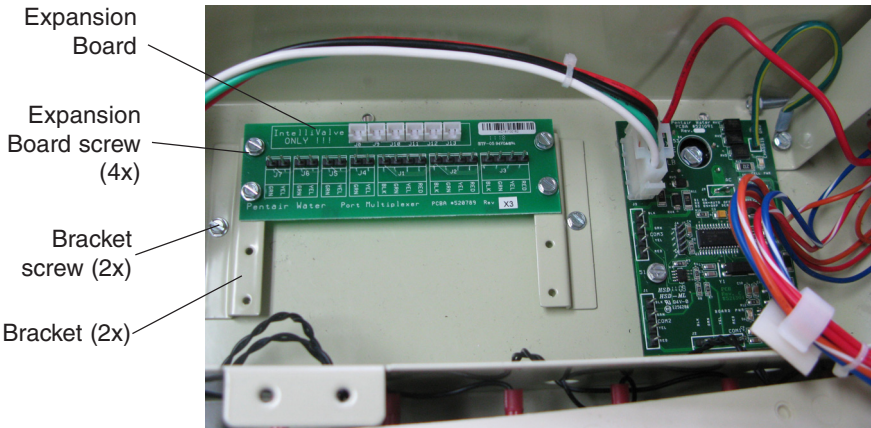
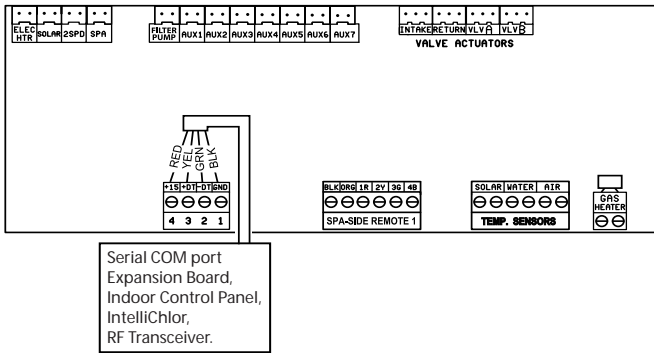


Figure 2. EasyTouch/IntelliTouch (New Style) Load Center



EasyTouch motherboard COM port location

1. **Expansion board COM port connections:** Connect the four-wire connector from the accessory to the COM port on the Expansion board COM port. Accessories include the IntelliTouch iS10 remote controller, QuickTouch, MobileTouch wireless controllers, indoor control panel, the EasyTouch control panel, wireless control panel, and the ScreenLogic protocol adapter, or any accessory that does not require a separate power supply.
2. **Connecting COM port terminal connector wires:** Strip back the cable conductors $\frac{1}{4}$ in. Insert the wires into the screw terminals of one of the COM PORT plugs. Using a small flat-blade screwdriver, secure the wires with the screws. Make sure to match the color coding of the four wires:
 - Pin 4 - Red = +15
 - Pin 3 - Yellow = +DT
 - Pin 2 - Green = -DT
 - Pin 1 - Black = GND
3. **Four two-pin non-power (RS-485) connectors:** Use these connectors to connect to IntelliFlo pumps, or load centers or any accessory that uses a separate power supply.

Note: IntelliValve connectors: For future use.

Wiring a Salt Chlorine Generator to IntelliTouch® Control System



IMPORTANT WIRING INFORMATION WHEN USING SALT CHLORINE GENERATORS WITH INTELLITOUCH

Be sure to check the wire color and function of the salt chlorine generators before attaching to the IntelliTouch® COM port. See the wiring table below.

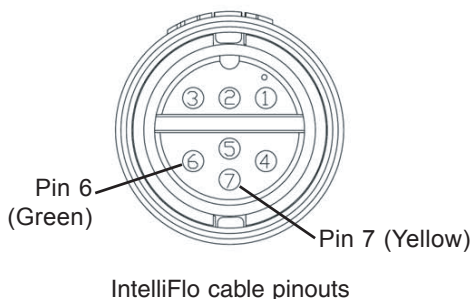
Commonly used salt chlorine generator wiring is shown in the table below but should still be verified.

Failure to wire the salt chlorine generator properly can permanently damage the IntelliTouch system or chlorine generator.

IntelliTouch COM port wire color connection	Function	Chlorine Generator Generator commonly used wire colors
RED YELLOW GREEN BLACK	+15V +DATA -DATA GROUND	RED BLACK YELLOW GREEN

IntelliFlo pump wiring pinouts

- Connect pin 6 (green) on the pump cable to pin 2 (green) on the Expansion Board two-pin screw terminal.
- Connect pin 7 (yellow) on the pump cable to pin 3 (yellow) on the Expansion Board two-pin screw terminal.



Expansion Board
two-pin screw terminal

Yellow Green



screw terminal connector	IntelliFlo (2-wire cable)
2 (GRN)	GREEN (Pin 6)
3 (YEL)	YELLOW (Pin 7)

Pinouts

